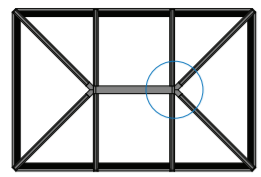
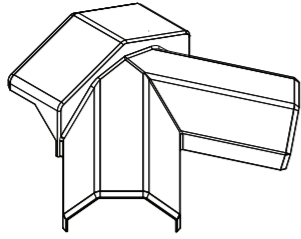


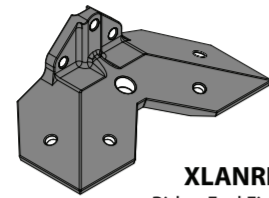
STRATUS COMPONENTS



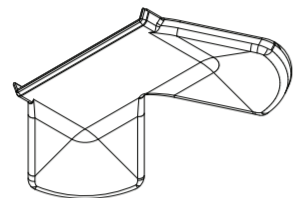
2-WAY COMPONENTS



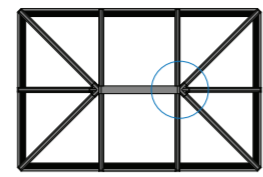
**XLANRE2-TC**  
Ridge End Fixed 20°  
2-Way Top Cap



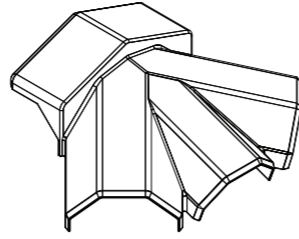
**XLANRE2**  
Ridge End Fixed 20°  
2-Way Lantern Roof Casting



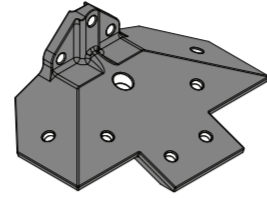
**XLANRE2-BC**  
Ridge End 2-Way  
Internal Cover



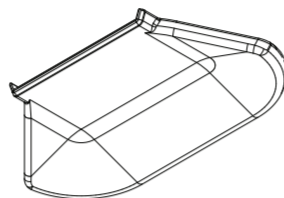
3-WAY COMPONENTS



**XLANRE3-TC**  
Ridge End Fixed 20°  
3-Way Top Cap



**XLANRE3**  
Ridge End Fixed 20°  
3-Way Lantern Roof Casting

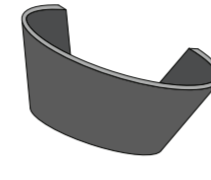


**XLANRE3-BC**  
Ridge End 3-Way  
Internal Cover

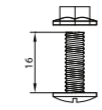
**K2-KDC8031**  
Ridge Holding Bolt  
200mm Long  
(M8 Nylon)



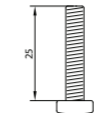
**XREC4**  
Global M8  
Bolt Cover



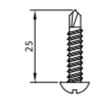
**XLANRE-FB1**  
Radius End  
Foam Infill



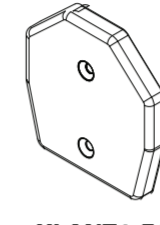
**XLAN-M516**  
M5 x 16mm  
Fixing Bolt



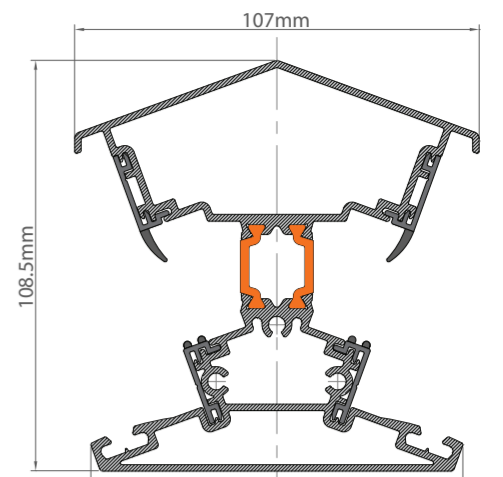
**XM525**  
M5 x 25mm  
Ridge to Radius End  
Machine Screw



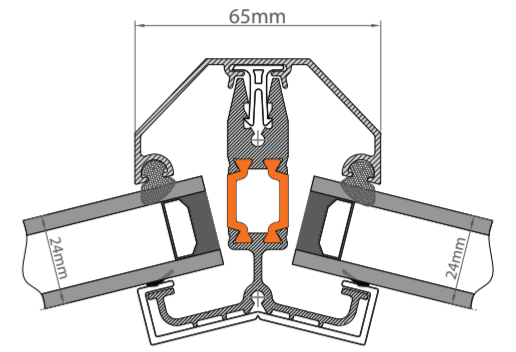
**8PSR42-25BLK**  
4.2 x 25mm  
End Cap Screw



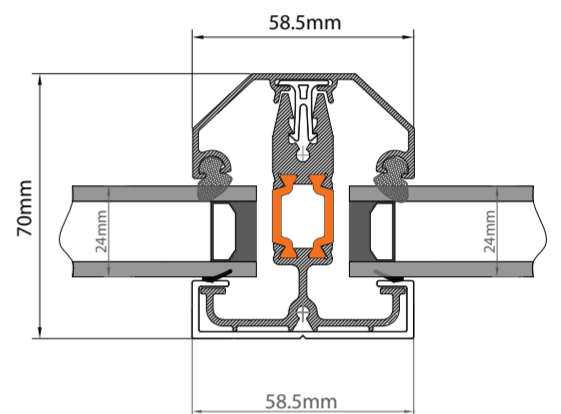
**XLANT1-EC**  
Rafter & Georgian  
Hip End Cap



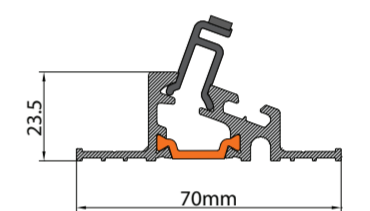
RIDGE ASSEMBLY



GEORGIAN HIP RAFTER ASSEMBLY



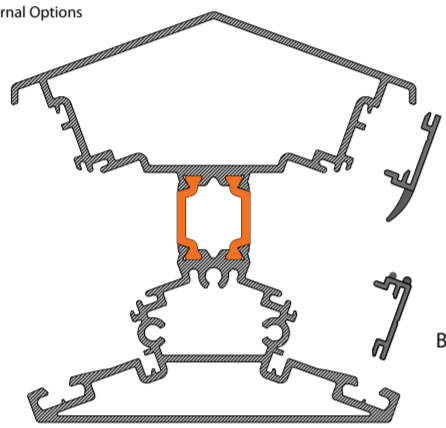
RAFTER ASSEMBLY



EAVES BEAM ASSEMBLY

STRATUS EXTRUSIONS

External Options



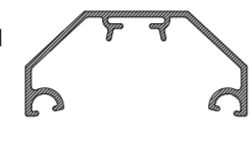
**XLAN-P6030**  
Top Cloaking Trim

**K2-KDP6028**  
Bottom Cloaking Trim

Internal Option

**XLANR20**  
Ridge

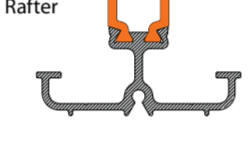
**XLANR1-C1**  
Rafter Top  
Cap



**XLAN-P6074**  
Top Cap Clip



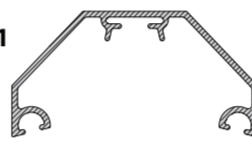
**XLANR1**  
Rafter



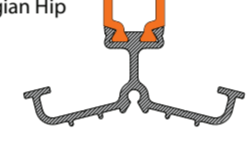
**XBC2**  
Rafter Bottom  
Cap



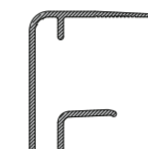
**XLANGH1-C1**  
Georgian Hip  
Top Cap



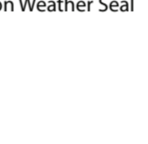
**XLANGH1**  
Georgian Hip



**K2-KDA5161**  
Aluminium  
End Closer



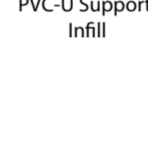
**K2-C9060**  
Q-Lon Weather Seal



**XLANEB1**  
Eaves Beam Plate



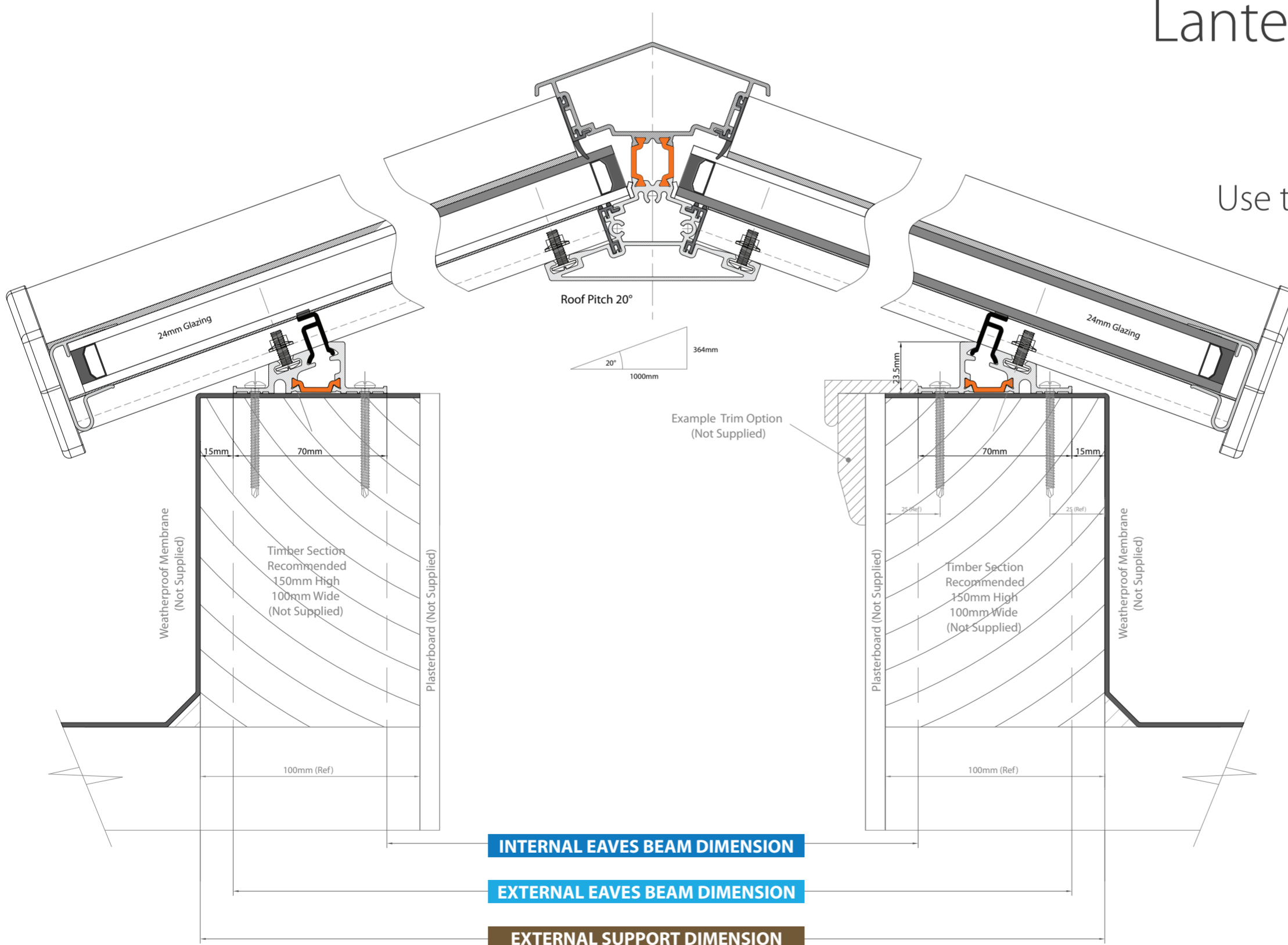
**XP51**  
PVC-U Support  
Infill



COLOUR GUIDE

- Grey RAL 7016
- White RAL 9016
- Black RAL 9005

Lantern cross section



Use these guides to aid setting out your Stratus Thermal Lantern Roof correctly

**INTERNAL EAVES BEAM DIMENSION**

▼ +140mm ( 70mm + 70mm ) ▼

**EXTERNAL EAVES BEAM DIMENSION**

**EXTERNAL EAVES BEAM DIMENSION**

▼ +30mm ( 15mm + 15mm ) ▼

**EXTERNAL SUPPORT DIMENSION**

**INTERNAL EAVES BEAM DIMENSION**

▼ +170mm ( 85mm + 85mm ) ▼

**EXTERNAL SUPPORT DIMENSION**

**FOR OPTIMUM LOOKS**  
Width x 1.5 / 2 / 2.5 Length etc.  
example 1400 (W) x 2100mm (L)

24mm GLAZING

20° FIXED PITCH

CONTEMPORARY MAX SIZE  
1500 (W) x 3000mm (L)

2-WAY MAX SIZE  
1500 (W) x 6000mm (L)

3-WAY MAX SIZE  
3000 (W) x 6000mm (L)

SUGGESTED PERIMETER SUPPORT  
100 (W) x 150mm (H)

stratus thermal lantern roof